



New York State Crime Report

Kathy Hochul
Governor

Rossana Rosado
Commissioner

Crime in New York State 2021 Final Data

New York State and the FBI use seven Index crime categories as indicators of overall crime trends: murder, rape, robbery and aggravated assault, which are classified as violent crimes, and the property crimes of burglary, larceny and motor vehicle theft. The FBI created these categories to allow for uniform crime reporting across all 50 states. Police departments and sheriffs' offices in New York report Index crime to the Division of Criminal Justice Services (DCJS) through the Uniform Crime Reporting and Incident-Based Reporting programs. This report details 2021 Index crime in New York State, its 62 counties and two regions: New York City and the 57 counties outside of the five boroughs (Non-New York City). This report also details Index crime rates per 100,000 population statewide and by county and region. DCJS uses county population data from the FBI, which is based on U.S. Census estimates, to calculate crime rates.

New York State implemented the FBI's expanded definition of rape in 2015; this resulted in an uptick in violent crime and reported rapes in that year compared to prior years. As a result, caution should be used when citing or interpreting any percentage changes between rapes reported in 2015, and any subsequent year, to those reported in 2014 and earlier.

The FBI [made the change](#) to more accurately reflect the scope and volume of sexual assaults nationwide. Before the implementation, those offenses would have been classified by the FBI and state as Part II sex offenses.

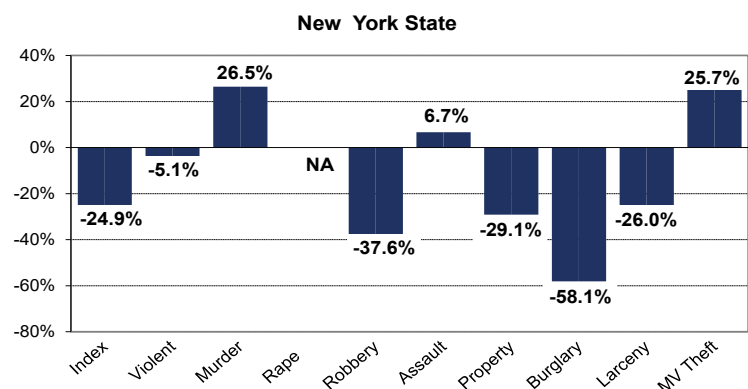
This report compares Index and violent crime over the 10-year period from 2012 through 2021, but it does not include percentage change comparisons between rape statistics reported in 2012 vs. 2021 because of the expanded definition.

Index crimes reported by police departments and sheriffs' offices to DCJS annually from 2017 to 2021 are online: www.criminaljustice.ny.gov (click the link to [Statistics](#)).

Reported Index crime in New York State increased slightly (+0.1%) in 2021, with 344,171 Index crimes reported. Crime, however, remained near historic lows. In 2020, there were 343,870 Index crimes reported, the second lowest number since statewide reporting began in 1975.

The state's Index crime rate declined by 24.9 percent when comparing 2012 and 2021. During the same time period, the violent crime rate decreased 5.1 percent but New York State experienced a significant increase in firearm-related homicides: 43.8 percent when comparing 2012 to 2021 (See page 4 for additional details). This increase mirrored trends occurring across the country.

Percentage Change in Crime Rates
2012 vs. 2021

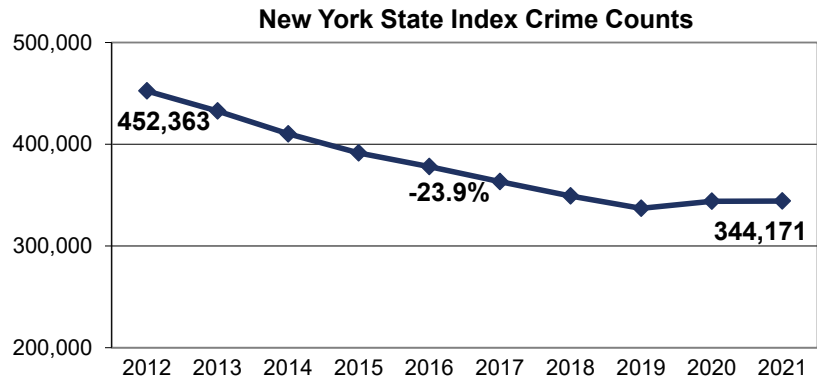


Change in Crime Volume: 2012 vs. 2021

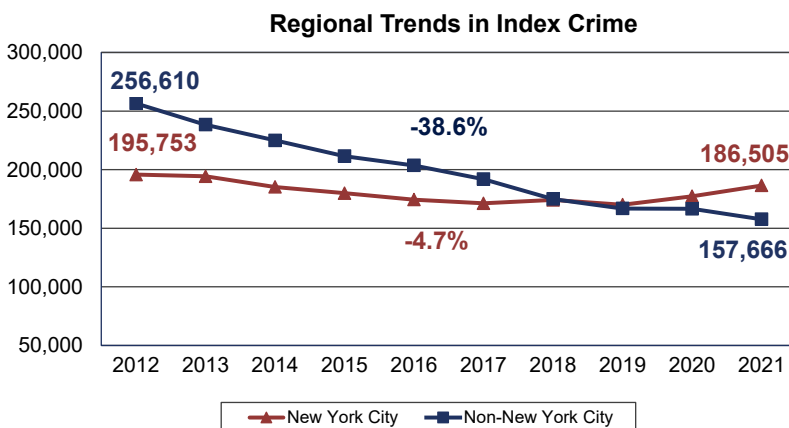
Between 2012 and 2021, Index crime declined, with 108,192 fewer crimes reported statewide.

This represents a 23.9 percent reduction in the volume of reported crime over the 10-year period.

Reported Index crime remains near the 2019 historic low.



Regional Trends in Crime: 2012 to 2021

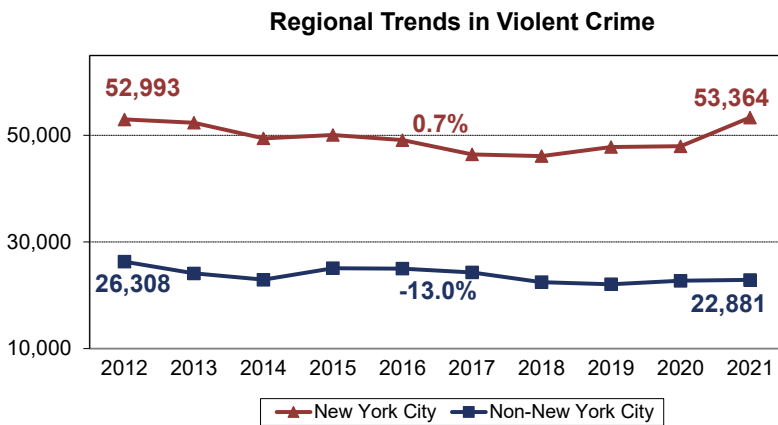


Index crimes in the state's two regions — New York City (five counties), and Non-New York City (57 counties) — declined when comparing 2021 to 2012. The Non-New York City decline significantly outpaced the decrease in New York City. Between 2012 and 2021, reported Index crime declined 38.6 percent in Non-New York City compared to 4.7 percent in New York City.

In 2021, crime volume in Non-New York City was lower than New York City for the third year in a row.

While reported violent crime decreased 13.0 percent in Non-New York City, New York City reported a slight increase in violent crime (0.7%).

As noted, the state's implementation of the FBI's expanded definition of rape resulted in an increase in violent crime in both regions from 2014 to 2015. This change resulted in 3,581 additional crimes being classified as rape in 2021; prior to the change, those offenses would have been classified by the FBI and state as Part II sex offenses.



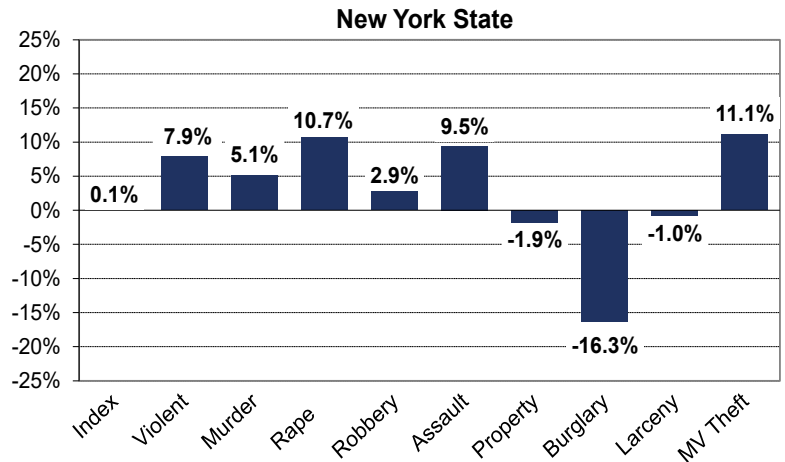
Statewide Crime Trends: 2020 vs. 2021

The number of Index crimes reported in New York State increased minimally (+0.1%) in 2021 compared to the previous year.

Total violent crime increased by 7.9 percent with increases across all violent crime categories: murder (+5.1%), rape (+10.7%), robbery (+2.9%), and aggravated assault (+9.5%).

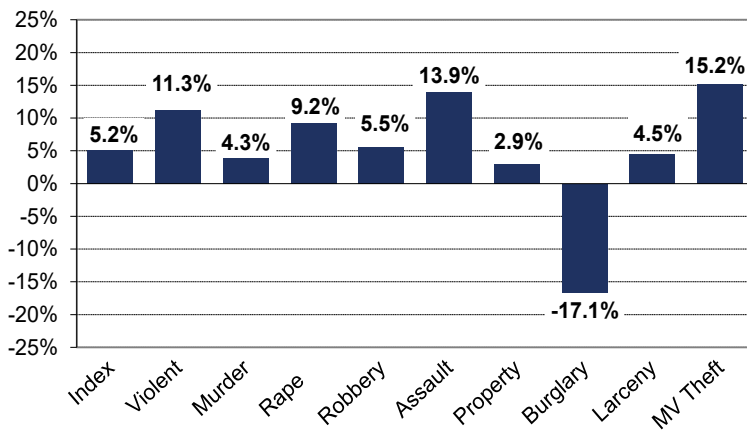
Property crime decreased by 1.9 percent, driven by burglary (-16.3%) and larceny (-1.0%) decreases. Motor vehicle thefts increased (+11.1%). Larcenies comprise more than 80 percent of all property crimes reported.

Percentage Change in Crime Volume
2020 vs. 2021



Regional Crime Trends: 2020 vs. 2021

New York City



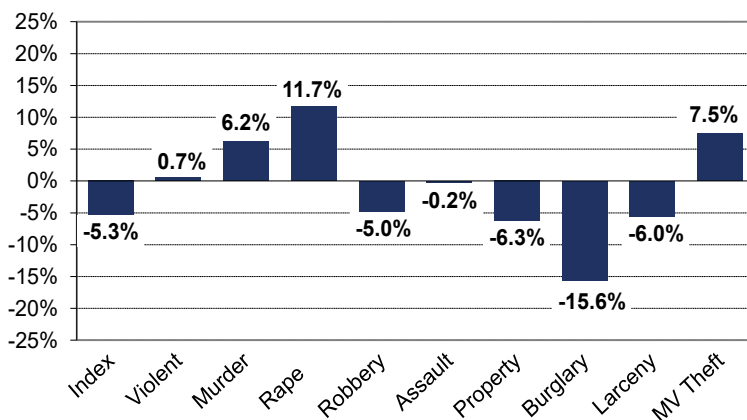
New York City

Index crimes increased (+5.2%) in 2021, largely due to the increase in reported violent crimes (+11.3%).

Violent crime increased across all four offense types: murder (+4.3%), rape (+9.2%), robbery (+5.5%), and aggravated assault (+13.9%).

Property crime increased (+2.9%) with larceny (+4.5%) and motor vehicle theft (+15.2%) increasing. Burglaries decreased dramatically (-17.1%).

Non-New York City



Non-New York City

Crime in Non-New York City declined 5.3 percent compared to 2020, largely due to a 6.3 percent reduction in property crime.

Violent crime increased less than one percent (+0.7%), with increases in murder (+6.2%) and rape (+11.7%), and decreases in robbery (-5.0%) and aggravated assault (-0.2%).

Total property crime was down (-6.3%) with declines in burglary (-15.6%) and larceny (-6.0%) reported. Motor vehicle theft increased (+7.5%).

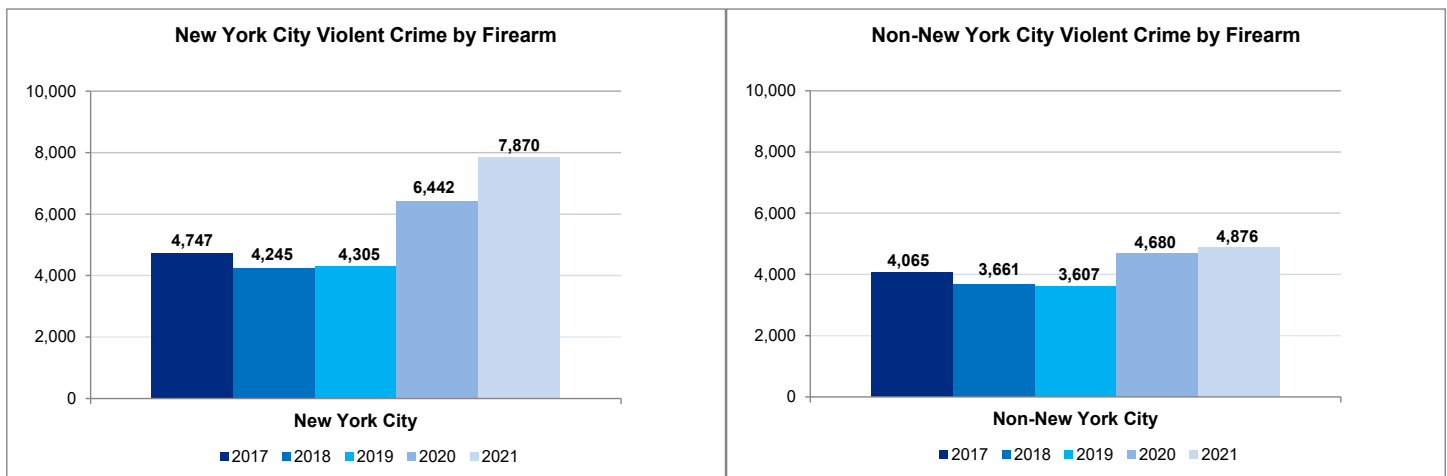
Appendix 3 lists crime rates by county for 2021 and Appendix 6 details crime counts by county for 2020 compared to 2021.

Trends in Violent Crime by Firearm: 2017 vs. 2021

In New York City, the number of violent crimes involving firearms increased 65.8 percent from 2017 to 2021 (4,747 vs. 7,870) and the 2021 total was 22.2 percent higher than the 6,442 crimes by firearm reported in 2020.

Violent crimes involving a firearm in Non-New York City increased 20.0 percent from 2017 to 2021 (4,065 vs. 4,876) and the 2021 total was 4.2 percent higher than the 4,680 crimes by firearm reported in 2020.

See Appendix 4 for more details.



Regional Trends in Homicide: 2012 through 2021

In 2021, total homicides and firearm related homicides in New York State increased for a second straight year. Statewide, there were 882 homicides, a 5.1 percent increase compared to 2020, when 839 homicides were reported.

The 882 statewide homicides were the most since 2006, when 928 homicides were reported. Increases occurred in both regions of the state in 2021: New York City was up 4.3 percent (488 vs. 468) and Non-New York City was up 6.2 percent (394 vs. 371).

When comparing 2021 to 2012, homicides statewide increased 28.2 percent (882 vs. 688). Regionally, homicides increased 16.5 percent (488 vs. 419) in New York City and increased 46.5 percent (394 vs. 269) in Non-New York City when comparing 2021 to 2012.

New York State Homicides 2012 - 2021											% Change	
	2012	2013	2014	2015	2016	2017	2018	2019	2020	2021	2020-21	2012-21
New York State												
Total Homicide	688	645	616	620	631	551	568	568	839	882	5.1%	28.2%
Non-Firearm Related	277	279	267	234	262	255	241	264	295	291	-1.4%	5.1%
Firearm Related	411	366	349	386	369	296	327	304	544	591	8.6%	43.8%
New York City												
Total Homicide	419	335	333	352	335	292	295	319	468	488	4.3%	16.5%
Non-Firearm Related	178	141	145	117	132	139	134	156	169	149	-11.8%	-16.3%
Firearm Related	241	194	188	235	203	153	161	163	299	339	13.4%	40.7%
Non-New York City												
Total Homicide	269	310	283	268	296	259	273	249	371	394	6.2%	46.5%
Non-Firearm Related	99	138	122	117	130	116	107	108	126	142	12.7%	43.4%
Firearm Related	170	172	161	151	166	143	166	141	245	252	2.9%	48.2%

Appendices 1 through 6

Data Source: DCJS Uniform Crime Reporting file; includes all reports received by the agency as of October 5, 2022.

The increase in violent crime and rape between 2014 and 2015 is attributable to New York State's implementation of the FBI's [expanded definition](#) of rape.

Appendix 6 shows index crime by county for 2020 and 2021 and the percent change in crime volume between those two years. Additional detail on reported crime by police agencies within each county, as well as the number of months for which specific agencies have not reported, is also available on [the DCJS website](#).

Appendix 1

New York State Index Crime Counts and Rates per 100,000 Population: 2012-2021

Counts	2012	2013	2014	2015	2016	2017	2018	2019	2020	2021	% change	
											2020-21	2012-21
Index Crime	452,363	432,695	410,181	391,449	378,000	363,185	349,135	337,005	343,870	344,171	0.1%	-23.9%
Violent Crime	79,301	76,481	72,365	75,157	74,126	70,709	68,576	69,889	70,673	76,245	7.9%	-3.9%
Murder	688	645	616	620	631	551	568	568	839	882	5.1%	28.2%
Rape	2,831	2,616	2,537	6,151	6,247	6,386	6,726	6,648	5,651	6,254	10.7%	N/A
Robbery	28,554	27,179	23,994	23,888	22,286	20,069	18,193	18,074	17,541	18,052	2.9%	-36.8%
Agg. Assault	47,228	46,041	45,218	44,498	44,962	43,703	43,089	44,599	46,642	51,057	9.5%	8.1%
Property Crime	373,062	356,214	337,816	316,292	303,874	292,476	280,559	267,116	273,197	267,926	-1.9%	-28.2%
Burglary	64,080	56,178	50,666	44,069	39,749	34,881	31,049	27,618	32,518	27,227	-16.3%	-57.5%
Larceny	291,780	284,527	271,417	256,881	249,781	244,224	236,398	226,788	220,953	218,783	-1.0%	-25.0%
MV Theft	17,202	15,509	15,733	15,342	14,344	13,371	13,112	12,710	19,726	21,916	11.1%	27.4%
Rates per 100,000 Pop.	2012	2013	2014	2015	2016	2017	2018	2019	2020	2021	% change	
											2020-21	2012-21
Index Crime	2,312.0	2,202.4	2,077.7	1,977.9	1,914.8	1,830.1	1,787.0	1,732.7	1,778.7	1,735.4	-2.4%	-24.9%
Violent Crime	405.3	389.3	366.6	379.7	375.5	356.3	351.0	359.3	365.6	384.4	5.2%	-5.1%
Murder	3.5	3.3	3.1	3.1	3.2	2.8	2.9	2.9	4.3	4.4	2.5%	26.5%
Rape	14.5	13.3	12.9	31.1	31.6	32.2	34.4	34.2	29.2	31.5	7.9%	N/A
Robbery	145.9	138.3	121.5	120.7	112.9	101.1	93.1	92.9	90.7	91.0	0.3%	-37.6%
Agg. Assault	241.4	234.3	229.0	224.8	227.8	220.2	220.5	229.3	241.3	257.4	6.7%	6.7%
Property Crime	1,906.7	1,813.1	1,711.2	1,598.1	1,539.3	1,473.8	1,436.0	1,373.4	1,413.1	1,351.0	-4.4%	-29.1%
Burglary	327.5	285.9	256.6	222.7	201.4	175.8	158.9	142.0	168.2	137.3	-18.4%	-58.1%
Larceny	1,491.3	1,448.2	1,374.8	1,297.9	1,265.3	1,230.7	1,209.9	1,166.1	1,142.9	1,103.2	-3.5%	-26.0%
MV Theft	87.9	78.9	79.7	77.5	72.7	67.4	67.1	65.3	102.0	110.5	8.3%	25.7%

Appendix 2

New York State Index Crime Summary by Region: 2012-2021

New York City	2012	2013	2014	2015	2016	2017	2018	2019	2020	2021	% change	
											2020-21	2012-21
Index Crime	195,753	194,355	185,191	179,948	174,402	171,248	174,164	170,120	177,319	186,505	5.2%	-4.7%
Violent Crime	52,993	52,384	49,444	50,088	49,124	46,433	46,113	47,821	47,959	53,364	11.3%	0.7%
Murder	419	335	333	352	335	292	295	319	468	488	4.3%	16.5%
Rape	1,162	1,112	1,070	2,244	2,372	2,375	2,814	2,770	2,253	2,460	9.2%	N/A
Robbery	20,201	19,170	16,581	16,946	15,544	13,995	12,962	13,396	13,182	13,909	5.5%	-31.1%
Agg. Assault	31,211	31,767	31,460	30,546	30,873	29,771	30,042	31,336	32,056	36,507	13.9%	17.0%
Property Crime	142,760	141,971	135,747	129,860	125,278	124,815	128,051	122,299	129,360	133,141	2.9%	-6.7%
Burglary	18,635	16,606	15,916	14,098	12,041	11,104	10,837	9,846	13,906	11,527	-17.1%	-38.1%
Larceny	115,935	117,931	112,107	108,376	106,868	107,976	111,680	106,931	106,196	110,950	4.5%	-4.3%
MV Theft	8,190	7,434	7,724	7,386	6,369	5,735	5,534	5,522	9,258	10,664	15.2%	30.2%
Non-New York City	2012	2013	2014	2015	2016	2017	2018	2019	2020	2021	% change	
											2020-21	2012-21
Index Crime	256,610	238,340	224,990	211,501	203,598	191,937	174,971	166,885	166,551	157,666	-5.3%	-38.6%
Violent Crime	26,308	24,097	22,921	25,069	25,002	24,276	22,463	22,068	22,714	22,881	0.7%	-13.0%
Murder	269	310	283	268	296	259	273	249	371	394	6.2%	46.5%
Rape	1,669	1,504	1,467	3,907	3,875	4,011	3,912	3,878	3,398	3,794	11.7%	N/A
Robbery	8,353	8,009	7,413	6,942	6,742	6,074	5,231	4,678	4,359	4,143	-5.0%	-50.4%
Agg. Assault	16,017	14,274	13,758	13,952	14,089	13,932	13,047	13,263	14,586	14,550	-0.2%	-9.2%
Property Crime	230,302	214,243	202,069	186,432	178,596	167,661	152,508	144,817	143,837	134,785	-6.3%	-41.5%
Burglary	45,445	39,572	34,750	29,971	27,708	23,777	20,212	17,772	18,612	15,700	-15.6%	-65.5%
Larceny	175,845	166,596	159,310	148,505	142,913	136,248	124,718	119,857	114,757	107,833	-6.0%	-38.7%
MV Theft	9,012	8,075	8,009	7,956	7,975	7,636	7,578	7,188	10,468	11,252	7.5%	24.9%

Note: The increase in violent crime and rape between 2014 and 2015 is attributable to New York State's implementation of the FBI's [expanded definition](#) of rape.

Appendix 3
New York State Index Crime Summary by County: 2021
Rates per 100,000 Population

County	Crime Rate			County	Crime Rate		
	Index	Violent	Property		Index	Violent	Property
Albany	2,506.6	357.6	2,149.0	Onondaga	1,937.0	356.8	1,580.3
Allegany	829.0	195.9	633.0	Ontario	1,282.2	150.2	1,132.0
Bronx	2,686.1	1,039.0	1,647.1	Orange	1,230.5	192.4	1,038.0
Broome	2,405.5	336.8	2,068.7	Orleans	905.8	144.8	761.0
Cattaraugus	1,404.8	198.2	1,206.5	Oswego	1,239.9	149.0	1,090.9
Cayuga	1,319.1	208.7	1,110.4	Otsego	998.7	136.9	861.7
Chautauqua	1,996.7	283.4	1,713.3	Putnam	511.9	57.4	454.5
Chemung	1,586.2	181.8	1,404.4	Queens	1,685.6	439.8	1,245.8
Chenango	1,542.4	208.0	1,334.3	Rensselaer	1,829.6	286.8	1,542.8
Clinton	1,086.7	133.5	953.1	Richmond	980.9	265.8	715.0
Columbia	977.9	133.4	844.6	Rockland	686.8	99.4	587.5
Cortland	1,560.4	124.5	1,435.9	St Lawrence	1,077.4	151.6	925.9
Delaware	1,058.2	156.6	901.6	Saratoga	1,049.8	113.7	936.0
Dutchess	1,104.8	183.0	921.8	Schenectady	2,421.2	332.4	2,088.9
Erie	2,172.9	370.2	1,802.7	Schoharie	909.1	116.4	792.7
Essex	745.5	149.6	595.8	Schuyler	276.5	55.3	221.2
Franklin	1,203.5	133.1	1,070.4	Seneca	1,545.3	189.9	1,355.4
Fulton	1,748.8	273.2	1,475.6	Steuben	845.9	168.6	677.4
Genesee	1,579.3	282.5	1,296.9	Suffolk	1,132.6	96.3	1,036.3
Greene	1,230.0	427.3	802.7	Sullivan	1,194.4	173.9	1,020.5
Hamilton	635.1	226.8	408.3	Tioga	859.8	116.7	743.1
Herkimer	1,432.8	213.9	1,218.9	Tompkins	1,911.7	173.7	1,738.0
Jefferson	1,675.0	199.8	1,475.2	Ulster	935.8	130.3	805.5
Kings	1,909.4	576.8	1,332.6	Warren	1,410.5	101.2	1,309.3
Lewis	496.6	78.4	418.2	Washington	547.5	109.8	437.7
Livingston	831.5	72.2	759.3	Wayne	1,343.9	207.2	1,136.7
Madison	1,288.5	179.1	1,109.4	Westchester	934.5	152.9	781.6
Monroe	1,974.6	303.6	1,671.0	Wyoming	651.2	129.3	522.0
Montgomery	1,315.1	117.2	1,197.9	Yates	721.4	134.0	587.4
Nassau	903.6	138.0	765.6				
New York	3,392.4	742.6	2,649.7	New York City	2,200.5	629.6	1,570.9
Niagara	1,678.7	272.7	1,405.9	Non-New York City	1,388.3	201.5	1,186.8
Oneida	2,112.8	285.5	1,827.3	New York State	1,735.4	384.4	1,351.0

Appendix 4
Violent Crime by Firearm
2017 - 2021

	New York City					% Change	
	2017	2018	2019	2020	2021	2020-21	2017-21
Violent Crime	46,433	46,113	47,821	47,959	53,364	11.3%	14.9%
Firearm Related	4,747	4,245	4,305	6,442	7,870	22.2%	65.8%
Percent Firearm Related	10.2%	9.2%	9.0%	13.4%	14.7%		
Murder	292	295	319	468	488	4.3%	67.1%
Firearm Related	153	161	163	299	339	13.4%	121.6%
Percent Firearm Related	52.4%	54.6%	51.1%	63.9%	69.5%		
Rape	2,375	2,814	2,770	2,253	2,460	9.2%	3.6%
Firearm Related	19	18	17	22	15	-31.8%	-21.1%
Percent Firearm Related	0.8%	0.6%	0.6%	1.0%	0.6%		
Robbery	13,995	12,962	13,396	13,182	13,909	5.5%	-0.6%
Firearm Related	2,151	1,865	1,679	2,070	2,424	17.1%	12.7%
Percent Firearm Related	15.4%	14.4%	12.5%	15.7%	17.4%		
Agg Assault	29,771	30,042	31,336	32,056	36,507	13.9%	22.6%
Firearm Related	2,424	2,201	2,446	4,051	5,092	25.7%	110.1%
Percent Firearm Related	8.1%	7.3%	7.8%	12.6%	13.9%		

	Non-New York City					% Change	
	2017	2018	2019	2020	2021	2020-21	2017-21
Violent Crime	24,276	22,463	22,068	22,714	22,881	0.7%	-5.7%
Firearm Related	4,065	3,661	3,607	4,680	4,876	4.2%	20.0%
Percent Firearm Related	16.7%	16.3%	16.3%	20.6%	21.3%		
Murder	259	273	249	371	394	6.2%	52.1%
Firearm Related	143	166	141	245	252	2.9%	76.2%
Percent Firearm Related	55.2%	60.8%	56.6%	66.0%	64.0%		
Rape	4,011	3,912	3,878	3,398	3,794	11.7%	-5.4%
Firearm Related	19	25	17	18	18	0.0%	-5.3%
Percent Firearm Related	0.5%	0.6%	0.4%	0.5%	0.5%		
Robbery	6,074	5,231	4,678	4,359	4,143	-5.0%	-31.8%
Firearm Related	1,679	1,464	1,300	1,241	1,179	-5.0%	-29.8%
Percent Firearm Related	27.6%	28.0%	27.8%	28.5%	28.5%		
Agg Assault	13,932	13,047	13,263	14,586	14,550	-0.2%	4.4%
Firearm Related	2,224	2,006	2,149	3,176	3,427	7.9%	54.1%
Percent Firearm Related	16.0%	15.4%	16.2%	21.8%	23.6%		

Appendix 5
Homicides and Homicides by Firearm
2012 - 2021

Year	New York City		Non-New York City		New York State	
	Homicides	Firearm Related	Homicides	Firearm Related	Homicides	Firearm Related
2012	419	241	269	170	688	411
2013	335	194	310	172	645	366
2014	333	188	283	161	616	349
2015	352	235	268	151	620	386
2016	335	203	296	166	631	369
2017	292	153	259	143	551	296
2018	295	161	273	166	568	327
2019	319	163	249	141	568	304
2020	468	299	371	245	839	544
2021	488	339	394	252	882	591
2021 vs. 2012 % Change	16.5%	40.7%	46.5%	48.2%	28.2%	43.8%

Source: DCJS, Uniform Crime Reporting File
Includes all reports received as of 10/5/2022.

Appendix 6
New York State Index Crime Summary by County
2020 vs. 2021

County	Year	Total	Violent	Murder	Rape	Robbery	Agg. Assault	Property	Burglary	Larceny	MV Theft
Albany	2020	7,398	1,095	17	108	213	757	6,303	715	5,160	428
	2021	7,809	1,114	20	103	205	786	6,695	665	5,532	498
	% change	5.6%	1.7%	17.6%	-4.6%	-3.8%	3.8%	6.2%	-7.0%	7.2%	16.4%
Allegany	2020	402	73	3	38	3	29	329	86	215	28
	2021	385	91	1	42	2	46	294	56	207	31
	% change	-4.2%	24.7%		10.5%		58.6%	-10.6%	-34.9%	-3.7%	10.7%
Bronx	2020	36,217	13,129	111	523	3,519	8,976	23,088	2,230	18,728	2,130
	2021	38,311	14,819	148	619	4,048	10,004	23,492	1,925	18,432	3,135
	% change	5.8%	12.9%	33.3%	18.4%	15.0%	11.5%	1.7%	-13.7%	-1.6%	47.2%
Broome	2020	5,180	660	5	126	78	451	4,520	669	3,634	217
	2021	4,649	651	5	132	84	430	3,998	631	3,183	184
	% change	-10.3%	-1.4%		4.8%	7.7%	-4.7%	-11.5%	-5.7%	-12.4%	-15.2%
Cattaraugus	2020	875	126	1	38	6	81	749	137	556	56
	2021	1,063	150	1	30	10	109	913	129	715	69
	% change	21.5%	19.0%		-21.1%		34.6%	21.9%	-5.8%	28.6%	23.2%
Cayuga	2020	1,295	212	2	68	19	123	1,083	167	854	62
	2021	1,024	162	3	63	12	84	862	117	696	49
	% change	-20.9%	-23.6%		-7.4%	-36.8%	-31.7%	-20.4%	-29.9%	-18.5%	-21.0%
Chautauqua	2020	2,937	398	1	83	36	278	2,539	542	1,920	77
	2021	2,565	364	3	70	54	237	2,201	487	1,617	97
	% change	-12.7%	-8.5%		-15.7%	50.0%	-14.7%	-13.3%	-10.1%	-15.8%	26.0%
Chemung	2020	1,503	172	2	32	28	110	1,331	131	1,133	67
	2021	1,335	153	8	24	19	102	1,182	136	986	60
	% change	-11.2%	-11.0%		-25.0%	-32.1%	-7.3%	-11.2%	3.8%	-13.0%	-10.4%
Chenango	2020	785	113	1	52	7	53	672	146	501	25
	2021	734	99	0	60	4	35	635	124	483	28
	% change	-6.5%	-12.4%		15.4%		-34.0%	-5.5%	-15.1%	-3.6%	12.0%
Clinton	2020	1,140	129	1	59	3	66	1,011	123	862	26
	2021	887	109	1	49	2	57	778	104	645	29
	% change	-22.2%	-15.5%		-16.9%		-13.6%	-23.0%	-15.4%	-25.2%	11.5%
Columbia	2020	724	93	1	27	11	54	631	94	513	24
	2021	594	81	1	29	7	44	513	71	416	26
	% change	-18.0%	-12.9%		7.4%		-18.5%	-18.7%	-24.5%	-18.9%	8.3%
Cortland	2020	862	97	1	40	5	51	765	129	619	17
	2021	752	60	1	17	6	36	692	82	585	25
	% change	-12.8%	-38.1%		-57.5%		-29.4%	-9.5%	-36.4%	-5.5%	47.1%

Appendix 6
New York State Index Crime Summary by County
2020 vs. 2021

County	Year	Total	Violent	Murder	Rape	Robbery	Agg. Assault	Property	Burglary	Larceny	MV Theft
Delaware	2020	464	68	1	29	1	37	396	96	280	20
	2021	473	70	0	27	5	38	403	118	268	17
	% change	1.9%	2.9%		-6.9%		2.7%	1.8%	22.9%	-4.3%	-15.0%
Dutchess	2020	3,734	579	9	93	88	389	3,155	246	2,760	149
	2021	3,320	550	5	107	66	372	2,770	230	2,358	182
	% change	-11.1%	-5.0%		15.1%	-25.0%	-4.4%	-12.2%	-6.5%	-14.6%	22.1%
Erie	2020	21,721	3,689	69	192	907	2,521	18,032	2,680	13,386	1,966
	2021	20,447	3,484	73	275	829	2,307	16,963	2,165	12,506	2,292
	% change	-5.9%	-5.6%	5.8%	43.2%	-8.6%	-8.5%	-5.9%	-19.2%	-6.6%	16.6%
Essex	2020	312	60	0	33	5	22	252	49	193	10
	2021	269	54	1	31	3	19	215	44	160	11
	% change	-13.8%	-10.0%		-6.1%		-13.6%	-14.7%	-10.2%	-17.1%	10.0%
Franklin	2020	653	79	0	32	7	40	574	116	430	28
	2021	615	68	0	33	5	30	547	106	409	32
	% change	-5.8%	-13.9%		3.1%		-25.0%	-4.7%	-8.6%	-4.9%	14.3%
Fulton	2020	958	113	1	31	11	70	845	140	669	36
	2021	941	147	2	43	16	86	794	98	625	71
	% change	-1.8%	30.1%		38.7%	45.5%	22.9%	-6.0%	-30.0%	-6.6%	97.2%
Genesee	2020	827	103	0	34	15	54	724	101	578	45
	2021	917	164	2	44	11	107	753	114	595	44
	% change	10.9%	59.2%		29.4%	-26.7%	98.1%	4.0%	12.9%	2.9%	-2.2%
Greene	2020	550	192	0	25	2	165	358	58	288	12
	2021	593	206	3	37	5	161	387	62	312	13
	% change	7.8%	7.3%		48.0%		-2.4%	8.1%	6.9%	8.3%	8.3%
Hamilton	2020	46	7	0	4	0	3	39	7	29	3
	2021	28	10	0	6	0	4	18	4	14	0
	% change	-39.1%						-53.8%		-51.7%	
Herkimer	2020	900	106	1	40	7	58	794	127	644	23
	2021	891	133	5	37	7	84	758	83	644	31
	% change	-1.0%	25.5%		-7.5%		44.8%	-4.5%	-34.6%	0.0%	34.8%
Jefferson	2020	2,055	278	3	74	22	179	1,777	257	1,452	68
	2021	1,844	220	2	90	14	114	1,624	230	1,338	56
	% change	-10.3%	-20.9%		21.6%	-36.4%	-36.3%	-8.6%	-10.5%	-7.9%	-17.6%
Kings	2020	50,938	14,590	175	701	3,816	9,898	36,348	4,099	29,306	2,943
	2021	50,476	15,249	150	713	3,590	10,796	35,227	3,478	28,819	2,930
	% change	-0.9%	4.5%	-14.3%	1.7%	-5.9%	9.1%	-3.1%	-15.2%	-1.7%	-0.4%

Appendix 6
New York State Index Crime Summary by County
2020 vs. 2021

County	Year	Total	Violent	Murder	Rape	Robbery	Agg. Assault	Property	Burglary	Larceny	MV Theft
Lewis	2020	149	24	0	14	0	10	125	44	73	8
	2021	133	21	0	12	0	9	112	20	76	16
	% change	-10.7%	-12.5%		-14.3%			-10.4%	-54.5%	4.1%	
Livingston	2020	566	51	0	28	5	18	515	71	430	14
	2021	530	46	0	18	2	26	484	77	381	26
	% change	-6.4%	-9.8%		-35.7%		44.4%	-6.0%	8.5%	-11.4%	85.7%
Madison	2020	955	134	2	41	10	81	821	122	668	31
	2021	928	129	0	52	9	68	799	116	620	63
	% change	-2.8%	-3.7%		26.8%		-16.0%	-2.7%	-4.9%	-7.2%	103.2%
Monroe	2020	16,111	2,272	48	229	545	1,450	13,839	2,275	10,174	1,390
	2021	15,004	2,307	82	215	566	1,444	12,697	1,689	9,289	1,719
	% change	-6.9%	1.5%	70.8%	-6.1%	3.9%	-0.4%	-8.3%	-25.8%	-8.7%	23.7%
Montgomery	2020	766	69	1	11	11	46	697	90	576	31
	2021	662	59	2	15	8	34	603	68	495	40
	% change	-13.6%	-14.5%		36.4%		-26.1%	-13.5%	-24.4%	-14.1%	29.0%
Nassau	2020	12,244	1,826	23	54	523	1,226	10,418	975	8,741	702
	2021	12,538	1,915	19	172	445	1,279	10,623	838	9,156	629
	% change	2.4%	4.9%	-17.4%	218.5%	-14.9%	4.3%	2.0%	-14.1%	4.7%	-10.4%
New York	2020	47,676	9,264	84	430	3,053	5,697	38,412	4,449	32,568	1,395
	2021	53,543	11,721	92	484	3,562	7,583	41,822	3,485	36,710	1,627
	% change	12.3%	26.5%	9.5%	12.6%	16.7%	33.1%	8.9%	-21.7%	12.7%	16.6%
Niagara	2020	4,769	661	16	97	141	407	4,108	568	3,167	373
	2021	3,576	581	11	86	85	399	2,995	439	2,265	291
	% change	-25.0%	-12.1%	-31.3%	-11.3%	-39.7%	-2.0%	-27.1%	-22.7%	-28.5%	-22.0%
Oneida	2020	4,465	558	13	112	91	342	3,907	484	3,215	208
	2021	4,913	664	10	169	113	372	4,249	481	3,422	346
	% change	10.0%	19.0%	-23.1%	50.9%	24.2%	8.8%	8.8%	-0.6%	6.4%	66.3%
Onondaga	2020	9,983	1,619	32	181	283	1,123	8,364	1,492	5,944	928
	2021	9,111	1,678	33	160	342	1,143	7,433	1,364	5,132	937
	% change	-8.7%	3.6%	3.1%	-11.6%	20.8%	1.8%	-11.1%	-8.6%	-13.7%	1.0%
Ontario	2020	1,514	168	2	73	12	81	1,346	187	1,116	43
	2021	1,451	170	1	68	13	88	1,281	178	1,057	46
	% change	-4.2%	1.2%		-6.8%	8.3%	8.6%	-4.8%	-4.8%	-5.3%	7.0%
Orange	2020	4,854	673	9	131	114	419	4,181	436	3,546	199
	2021	4,879	763	5	135	149	474	4,116	361	3,582	173
	% change	0.5%	13.4%		3.1%	30.7%	13.1%	-1.6%	-17.2%	1.0%	-13.1%

Appendix 6
New York State Index Crime Summary by County
2020 vs. 2021

County	Year	Total	Violent	Murder	Rape	Robbery	Agg. Assault	Property	Burglary	Larceny	MV Theft
Orleans	2020	464	64	0	21	7	36	400	82	291	27
	2021	369	59	0	14	4	41	310	50	240	20
	% change	-20.5%	-7.8%		-33.3%		13.9%	-22.5%	-39.0%	-17.5%	-25.9%
Oswego	2020	1,800	195	0	79	21	95	1,605	238	1,254	113
	2021	1,473	177	1	83	7	86	1,296	213	998	85
	% change	-18.2%	-9.2%		5.1%		-9.5%	-19.3%	-10.5%	-20.4%	-24.8%
Otsego	2020	637	75	0	30	7	38	562	80	458	24
	2021	598	82	0	40	5	37	516	78	411	27
	% change	-6.1%	9.3%		33.3%		-2.6%	-8.2%	-2.5%	-10.3%	12.5%
Putnam	2020	398	37	0	9	2	26	361	43	289	29
	2021	517	58	0	22	4	32	459	31	401	27
	% change	29.9%	56.8%				23.1%	27.1%	-27.9%	38.8%	-6.9%
Queens	2020	37,446	9,629	78	515	2,549	6,487	27,817	2,842	22,431	2,544
	2021	39,330	10,262	83	552	2,502	7,125	29,068	2,445	23,936	2,687
	% change	5.0%	6.6%	6.4%	7.2%	-1.8%	9.8%	4.5%	-14.0%	6.7%	5.6%
Rensselaer	2020	3,186	455	12	68	89	286	2,731	397	2,163	171
	2021	2,966	465	6	72	90	297	2,501	314	1,966	221
	% change	-6.9%	2.2%		5.9%	1.1%	3.8%	-8.4%	-20.9%	-9.1%	29.2%
Richmond	2020	5,042	1,347	20	84	245	998	3,695	286	3,163	246
	2021	4,845	1,313	15	92	207	999	3,532	194	3,053	285
	% change	-3.9%	-2.5%	-25.0%	9.5%	-15.5%	0.1%	-4.4%	-32.2%	-3.5%	15.9%
Rockland	2020	2,741	340	9	50	57	224	2,401	222	2,076	103
	2021	2,309	334	5	38	45	246	1,975	135	1,756	84
	% change	-15.8%	-1.8%		-24.0%	-21.1%	9.8%	-17.7%	-39.2%	-15.4%	-18.4%
St Lawrence	2020	1,131	137	1	50	7	79	994	162	811	21
	2021	1,180	166	2	66	8	90	1,014	148	828	38
	% change	4.3%	21.2%		32.0%		13.9%	2.0%	-8.6%	2.1%	81.0%
Saratoga	2020	2,230	225	4	80	19	122	2,005	256	1,676	73
	2021	2,492	270	3	105	24	138	2,222	246	1,920	56
	% change	11.7%	20.0%		31.3%	26.3%	13.1%	10.8%	-3.9%	14.6%	-23.3%
Schenectady	2020	3,855	563	6	41	108	408	3,292	400	2,647	245
	2021	3,861	530	5	59	87	379	3,331	371	2,710	250
	% change	0.2%	-5.9%		43.9%	-19.4%	-7.1%	1.2%	-7.3%	2.4%	2.0%
Schoharie	2020	315	43	0	12	4	27	272	31	229	12
	2021	289	37	1	15	0	21	252	28	216	8
	% change	-8.3%	-14.0%		25.0%		-22.2%	-7.4%	-9.7%	-5.7%	

Appendix 6
New York State Index Crime Summary by County
2020 vs. 2021

County	Year	Total	Violent	Murder	Rape	Robbery	Agg. Assault	Property	Burglary	Larceny	MV Theft
Schuyler	2020	49	10	0	4	2	4	39	9	30	0
	2021	50	10	0	6	0	4	40	7	30	3
	% change	2.0%	0.0%					2.6%		0.0%	
Seneca	2020	438	55	1	27	1	26	383	29	338	16
	2021	537	66	1	28	3	34	471	53	399	19
	% change	22.6%	20.0%		3.7%		30.8%	23.0%	82.8%	18.0%	18.8%
Steuben	2020	863	117	3	56	6	52	746	164	536	46
	2021	818	163	2	80	5	76	655	120	507	28
	% change	-5.2%	39.3%		42.9%		46.2%	-12.2%	-26.8%	-5.4%	-39.1%
Suffolk	2020	18,147	1,320	33	171	316	800	16,827	1,127	14,434	1,266
	2021	17,111	1,455	33	237	282	903	15,656	843	13,595	1,218
	% change	-5.7%	10.2%	0.0%	38.6%	-10.8%	12.9%	-7.0%	-25.2%	-5.8%	-3.8%
Sullivan	2020	852	147	4	45	17	81	705	125	545	35
	2021	927	135	5	40	14	76	792	141	602	49
	% change	8.8%	-8.2%		-11.1%	-17.6%	-6.2%	12.3%	12.8%	10.5%	40.0%
Tioga	2020	432	59	0	19	2	38	373	71	283	19
	2021	420	57	0	23	9	25	363	96	244	23
	% change	-2.8%	-3.4%		21.1%		-34.2%	-2.7%	35.2%	-13.8%	21.1%
Tompkins	2020	2,129	169	0	47	39	83	1,960	231	1,686	43
	2021	1,981	180	4	53	22	101	1,801	180	1,552	69
	% change	-7.0%	6.5%		12.8%	-43.6%	21.7%	-8.1%	-22.1%	-7.9%	60.5%
Ulster	2020	1,897	226	7	65	24	130	1,671	203	1,398	70
	2021	1,702	237	2	69	27	139	1,465	120	1,262	83
	% change	-10.3%	4.9%		6.2%	12.5%	6.9%	-12.3%	-40.9%	-9.7%	18.6%
Warren	2020	743	77	0	50	2	25	666	79	573	14
	2021	920	66	0	42	4	20	854	71	758	25
	% change	23.8%	-14.3%		-16.0%		-20.0%	28.2%	-10.1%	32.3%	78.6%
Washington	2020	369	87	0	47	4	36	282	49	210	23
	2021	339	68	1	34	4	29	271	36	217	18
	% change	-8.1%	-21.8%		-27.7%		-19.4%	-3.9%	-26.5%	3.3%	-21.7%
Wayne	2020	1,346	171	1	60	18	92	1,175	176	948	51
	2021	1,226	189	3	77	20	89	1,037	137	823	77
	% change	-8.9%	10.5%		28.3%	11.1%	-3.3%	-11.7%	-22.2%	-13.2%	51.0%
Westchester	2020	10,307	1,584	24	112	395	1,053	8,723	818	7,163	742
	2021	9,276	1,518	20	94	379	1,025	7,758	740	6,342	676
	% change	-10.0%	-4.2%	-16.7%	-16.1%	-4.1%	-2.7%	-11.1%	-9.5%	-11.5%	-8.9%

Appendix 6
New York State Index Crime Summary by County
2020 vs. 2021

County	Year	Total	Violent	Murder	Rape	Robbery	Agg. Assault	Property	Burglary	Larceny	MV Theft
Wyoming	2020	304	45	0	18	2	25	259	36	214	9
	2021	262	52	0	25	2	25	210	41	159	10
	% change	-13.8%	15.6%		38.9%		0.0%	-18.9%	13.9%	-25.7%	
Yates	2020	221	16	1	8	1	6	205	24	179	2
	2021	183	34	0	21	0	13	149	14	128	7
	% change	-17.2%	112.5%					-27.3%	-41.7%	-28.5%	

Notes: Percent change is not calculated when counts are less than 10.

Index and violent crime totals for 2020 and 2021 include the number of rapes reported under the expanded definition.